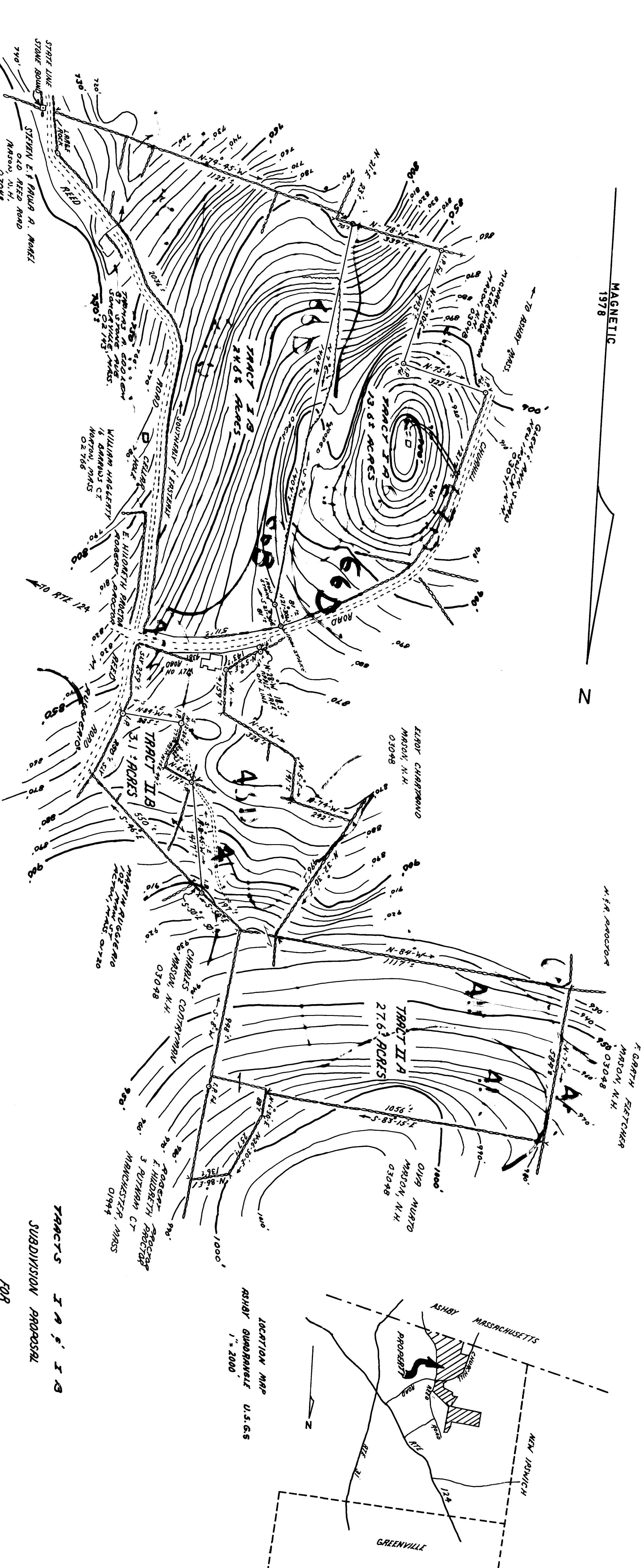


MAGNETIC
1978

N



LOCATION MAP
ASBY QUADRANGLE
U.S.G.S
1" = 2000'

TRACTS I A & I B
SUBDIVISION PROPOSAL
FOR

JAMES R. GRAHAM &
HELEN E. GRAHAM
MASON, NEW HAMPSHIRE

SCALE 1" = 200'



SOILS INFORMATION SHOWN HAS BEEN EXPANDED
FROM SOILS SURVEY FIELD SHEETS MADE AT A
SCALE OF 1" = 200'. THIS INFORMATION WAS
TRANSFERRED TO THIS PLAN BY THE HILLS-
BOROUGH COUNTY CONSERVATION DISTRICT.

Surveyed by R. M. Mason, Jr.
DATED BY H.C.C.D.

BOUNDARY VER RACE LINES ARE 35'
FROM PROPERTY LINES

COUNTY INTERNAL 5' FEET
ADAPTED FROM U.S.G.S. ASBY MASS.-N.H.
QUADRANGLE

TRACT II B PREVIOUSLY APPROVED BY RECONSTRUCTION BOARD
TRACT II B CONVEYED TO R.P.R.F.
NORTHLEIGH STRAWBERRYHILL

BOUNDARY AS SHOWN BY LANDOWNERS

PL 1513
5/24/78
5/20/78
R.P.R.F.

SURVEYED MAY 15, 1978 BY:
REVISED JULY 13, 1983

by William H. Mason

SURVEYED BY WILLIAM H. MASON, R.S.S.
AND THOMAS B. MASON, R.S.S.

DRAWN BY EDWARD C. GODDARD, JR.

| MAISON | PLANNING | BOARD |
|-----------|----------|-------|
| CHARTERED | | |
| SELECTION | | |
| DATE | | |
| REMARKS | | |

THE SUBDIVISION REQUIREMENTS OF THE TOWN OF MASON ARE A PART OF
THIS MAP, AND APPROVAL OF THIS MAP IS CONTINGENT ON COMPLIANCE
OF ALL THE REQUIREMENTS OF THE SUBDIVISION REQUIREMENTS, INCLUDING
ONLY THE REQUIREMENTS OF THE SUBDIVISION REQUIREMENTS, INCLUDING
BOARD AND ATTACHED HERETO.

AUG 12 11 40 AM '83

#1513
DA 71

PL15035
DWG# 71